



# LED T8 TUBE WRAP SERIES

LW848218SC-B  
04/14

## QUESTIONS OR CONCERNS, CONTACT CANARM AT:

1-800-265-1833 (English) 1-800-567-2513 (French) Monday through Friday 8:00 AM to 5:00 PM E.S.T.



INSTRUCTIONS PERTAINING TO RISK OF FIRE OR INJURY TO PERSONS  
READ ALL INSTRUCTIONS

## IMPORTANT SAFETY INSTRUCTIONS SAVE THESE INSTRUCTIONS

## TOOLS AND MATERIALS REQUIRED:



Star-headed  
Screwdriver



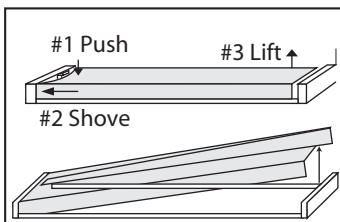
Pliers

Wiring supplies as required  
by electrical code

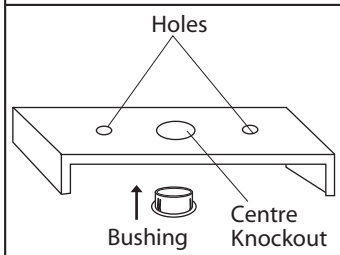
## SAFETY PRECAUTIONS:

1. **TURN OFF ELECTRICAL POWER BEFORE STARTING INSTALLATION OF LIGHT FIXTURE.**
2. **THIS PRODUCT MUST BE INSTALLED IN ACCORDANCE WITH THE APPLICABLE INSTALLATION CODE BY A PERSON FAMILIAR WITH THE CONSTRUCTION AND OPERATION OF THE PRODUCT AND THE HAZARDS INVOLVED.**
3. **THIS FIXTURE IS DESIGNED FOR 120-277 VOLT CIRCUIT. IF UNSURE ABOUT WIRING, CONSULT AN ELECTRICIAN. WARNING: DO NOT CONNECT FIXTURE TO DIMMER CIRCUIT.**
4. **THIS FIXTURE MUST BE GROUNDED PROPERLY. CONNECT THE GROUND WIRE (BARE COPPER OR GREEN) TO THE AC SUPPLY GROUND WIRE (BARE COPPER OR GREEN) OR GROUND SCREW IN THE ELECTRICAL OUTLET BOX. IF GROUND WIRE IS NOT AVAILABLE IN YOUR AC SUPPLY WIRE SYSTEM, PLEASE CONSULT A QUALIFIED ELECTRICIAN BEFORE PROCEEDING THE ELECTRICAL CONNECTION.**
5. **\*IMPORTANT\* – THIS FIXTURE HAS BEEN CERTIFIED TO USE ONLY CANARM LED TUBES. ONLY USE PART NUMBER B-LEDT812018CW / B-LEDT812018NW OR MODEL NUMBER LKB-T812-60CL-18-IN / LKB-T812-45CL-18-IN. FAILURE TO USE THE PROPER TUBES MAY RESULT IN PRODUCT FAILURE OR SHORT CIRCUIT.**

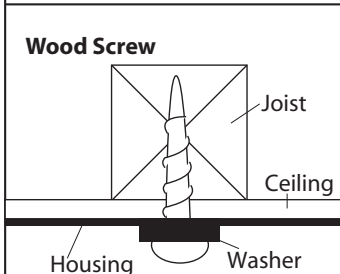
## INSTALLATION:



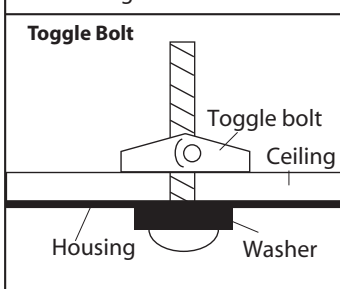
1. Remove the Acrylic Lens and place aside to avoid possible damage. Slide the lens towards one end of the fixture. Gently press down the end of the lens that is away from the housing. (Be careful not to crack the lens.) This will release the lens from the retaining clip. Lift up this end and pull the lens away from the fixture.



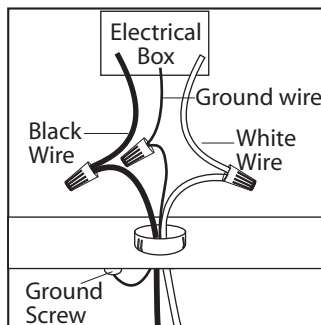
2. Turn the fixture over and locate the center knockout. Make sure the fixture is supported on the underside and break part of the knockout away using a hammer and screw driver. Twist out the knockout using pliers. Install the bushing as shown to the centre knockout to protect the wires.



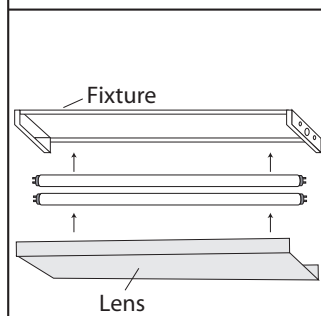
3. Position the housing on the ceiling with the center knockout over the electrical box. Mark the ceiling for the pilot hole locations through the small holes on either end. Drill 1/8" pilot holes at each location. Determine the appropriate way of fastening the fixture to the ceiling (wood screws or toggle bolts, not included).



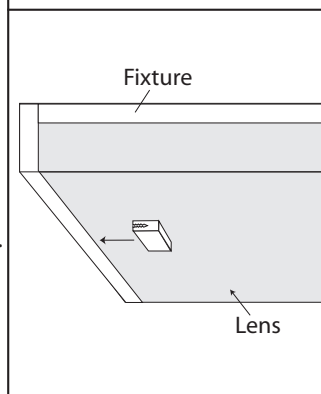
Note: Toggle bolts will require a larger pilot hole. Secure the fixture to the ceiling using the appropriate fasteners.



4. Connect the ground wires (bare copper or green) from your fixture to the ground wire (bare copper or green) or ground screw in the electrical outlet box. Connect black wire from fixture to black wire in outlet box and connect the white wire from fixture to white wire in outlet box. Once connections of wires are completed, carefully tuck wires and wire nuts into the outlet box making sure no bare wire (on the black and white) is visible at the wire nuts.



5. **\*IMPORTANT\*** - Install only Canarm LED Tubes with the part number B-LEDT812018CW / B-LEDT812018NW or model number LKB-T812-60CL-18-IN / LKB-T812-45CL-18-IN. Insert the pins from the end marked "AC Input only" into the end of the fixture that is connected to the wiring. Insert the other end into lamp holders on the other end of the fixture and turn the tube so the white cover is facing away from the fixture. Rotate the tube until a slight "click" is felt. Repeat for additional tubes.



6. Replace the lens by reversing the process of Step #1.

7. Insert the safety clip as shown in both ends to avoid possible falling of lens.